

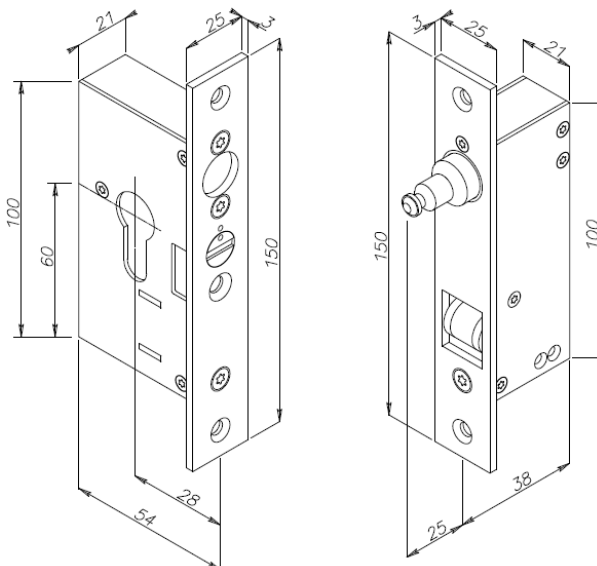
MOUNTING INSTRUCTIONS

Nr.
1303/1659

ARCA KEY SLIDE

ART. 23822 – 23824 – 23822FG – 23824FG

Rev. 0
17/10/13



TECHNICAL CHARACTERISTICS

Operating voltage	Absorbed current	Resistance to breaking and entering	Release under load	Inserted pin signal	Open release lever
12 or 24 Vdc	1A to 12Vdc 500mA to 24Vdc	800Kg	Max. 50N	Yes	Version "FG" only

FUNCTIONING

The security lock can be electrically commanded for the controlled closing of sliding doors. Counterlock with rollaway pin, invisible when the door is open

INSTALLATION

Fixing of the lock:

1. Find the lock position on the fixed frame
2. Make a hole in the frame that can hold the lock and a further hole for the cylinder passage
3. Make the electrical wiring
4. Fix the lock

Fixing of the counterlock:

1. Hook up the counterlock to the lock and, approaching the door, find its correct position
2. Make a hole in the frame that can house the counterlock
3. Fix the counterlock

Testing:

Close the door and check its holding force

Operate the electrical or manual release to release the door

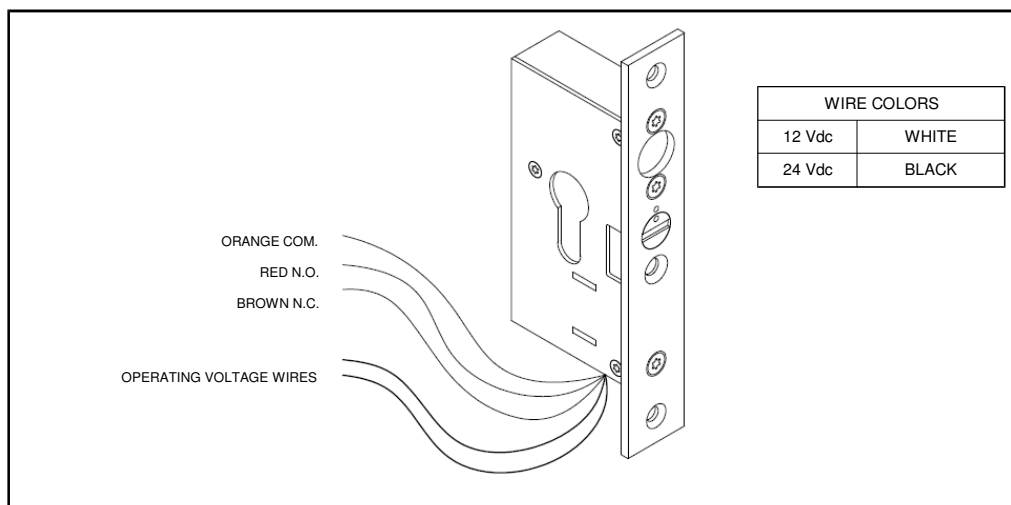
If the door does not close:

- Be sure that lock and counterlock are aligned
- Check if there are no interferences with other objects
- Control that the open release lever, if present, is in the "0" position

If the door does not open:

- Check that operating voltage values are congruent
- Verify that on the holding pin the force is not more then 50N

CONNECTION SCHEME



OPEN RELEASE LEVER



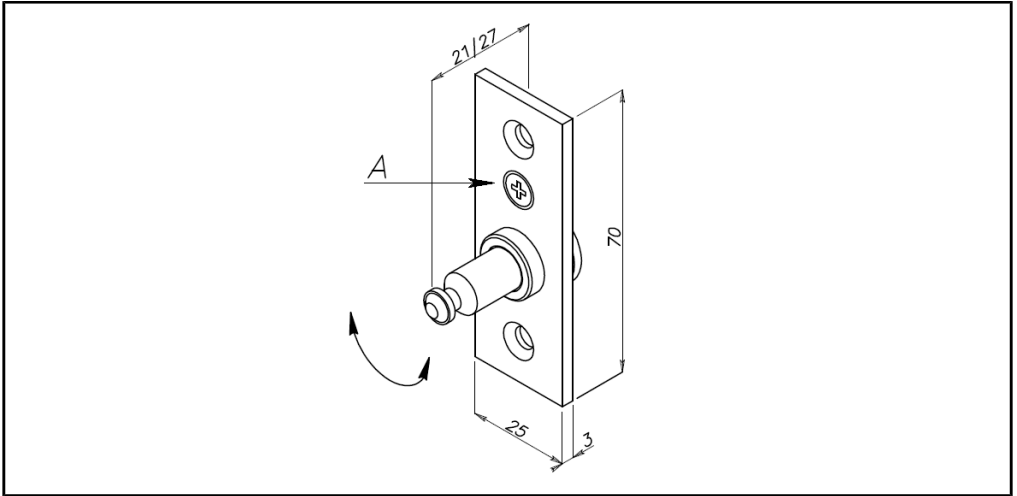
USAGE INSTRUCTIONS

Close the door checking its holding force

Activate the electrical release and check if the door is released

Attention: don't pull the door before having pushed the appropriate button

FIXED COUNTERPLATE Item CF



Fixing the fixed counterplate:

1. Hook up the fixed counterplate to the lock and, approaching the door, find its correct position
2. Make a hole in the frame that can house the fixed counterplate
3. Fix the fixed counterplate
4. Regulate the protrusion of locking pin

To regulate the protrusion of the locking pin, it is necessary to:

- Loosen the "A" screw
- Turn the lock pin to regulate the protrusion
- Once the correct protrusion is found, tighten the "A" screw

Attention: the fixed counterplate is supplied upon request only.

MAINTENANCE

It is recommended to execute ordinary maintenance controls not less than once every three months, checking that all components are in good operating conditions

In particular:

- Check that the door is held by the lock
- Verify the functioning of the electrical and manual release
- Control the correct tightening of the screws

Instructions and all indications have to be supplied by the installer to the final user



Via Portogallo 43 – 41122 Modena (MO) – Italy – Tel. +39 059 451708 – Fax +39 059 451697
Internet: www.opera-italy.com e-mail: info@opera-access.it